

The 2025 Annual Meeting of the International Federation of Finance Museums

Brussels, 19-20 November 2025

Empowering Financial Futures

Innovations in Education Centres and Museums

PRACTICAL INFORMATION



FOREWORD

Dear Guests,

Along with my colleagues of the FSMA Management Committee and our financial education team, I am delighted to welcome you to Brussels.

We are honoured to host the conference *Empowering Financial Futures: Innovations in Education Centres and Museums* at the FSMA and its financial education centre, the Wikifin Lab, from 19 to 20 November 2025.

The FSMA is convinced of the vital importance of financial education and is therefore organizing this conference to help strengthen financial literacy around the world. Since 2013, the FSMA has been actively engaged in this area through its Wikifin programme based on three main pillars:

- Providing citizens with independent, reliable information on financial matters and practical tools via our website Wikifin.be;
- Supporting financial education in schools with dedicated teaching materials and training; and
- Welcoming secondary-school students in our Wikifin Lab, our interactive learning centre for financial education.
- This year's IFFM Annual Meeting promises to be a fruitful exchange of ideas, where educators, museum professionals, academics, and financial wizards from around the world will connect, collaborate and inspire.

In this booklet, you will find various useful pieces of information for your stay.

Any updates will be communicated to you via email.

We hope you will find your stay both enriching and rewarding.

Warm regards,

Jean-Paul Servais

Jean-Paul Servais

*Chairman of the Financial Services and Markets Authority (FSMA)
Chair of the IOSCO Board (International Organization of Securities Commissions)*



PROGRAMME (Preliminary)

Venue

Financial Services and Markets Authority (FSMA)
Rue du Congrès, 12-14 - 1000 Brussels

WEDNESDAY, 19 November 2025

09:30 - 10:00	Registration of participants, Morning coffee
10:00 - 10:10	Opening of the conference Annemie Rombouts - Deputy Chairman of the FSMA
10:10 - 11:15	Regenerating Economics and Financial Education <ul style="list-style-type: none">• Jennifer Brandsberg-Engelmann on Regenerative Economics• Cecilia Von Hejne on museum strategic planning and new ideas for exhibitions
11:15 - 11:45	Coffee break
11:45 - 13:00	Unlocking Curiosity <ul style="list-style-type: none">• Philippe Gineste - Citeco (France)• Maria Karvanoupoulou - Bank of Greece• Ophélie Martin - Tempora (designer) (Belgium)
13:00 - 14:00	Networking lunch
14:00 - 15:15	Beyond the Museum Walls <ul style="list-style-type: none">• Phillip List - FLIP (Austria)• Riccardo Finozzi - Bank of Italy• Wim Putzeys - Designer (Belgium)
15:15 - 15:45	Coffee break
15:45 - 17:00	Rethink & Rebuild <ul style="list-style-type: none">• Giovanna Paladino - Museum of Savings (Italy)• Silvia Singer (or delegate) - MIDE (Mexico)• Wim Mijs - European Banking Federation
17:00	Group photo in the Wikifin Lab

SOCIAL EVENT, 19 November 2025

THE MUSEUM OF INTERACTIVE REALITIES (MOIR)



At MOIR, art, technology and storytelling merge to transform you from a spectator into a hero of your own epic tale. “Explore the True You” leads you through seven beautifully designed rooms, culminating in a striking reflection of your inner essence as you encounter a holographic animal guide which represents yourself.

*The experience includes strobe lighting. Please inform the staff if this may affect you.

DINNER AT THE WOLF

WOLF is a lively food market in the center of Brussels. It is located in a former bank building on “Rue Fossé aux Loups” (Wolf ditch street). Its name refers to the wolves that once came from the nearby Sonian Forest.

The market brings together many international food stalls. We will have a private room for our dinner.



THURSDAY, 20 November 2025

9:00 - 9:30	Registration of participants, Morning coffee
9:30 - 10:45	Workshops
10:45 - 11:15	Coffee break
11:15 - 12:30	Workshops
12:30 - 13:30	Networking lunch
13:30 - 14:45	Workshops
15:00	End of event

WORKSHOP THEMES

Let's dive into the Wikifin Lab

Expert Tips on Design

Step Inside, virtually

Access Through Art

Programming Trends & Evaluation Methods

...

THE WIKIFIN LAB

The Wikifin Lab is the interactive experience centre for financial education where secondary school students can experiment with different financial situations from everyday life.



LOCATION

The meeting will take place at the Financial Services and Markets Authority and its financial education centre: the Wikifin Lab.



FSMA - Rue du Congrès, 12-14, Brussels, Belgium

GPS location: 50.8463° N, 4.3580° E



Train station “Bruxelles Central” - Carrefour de l’Europe, Brussels



ACCOMMODATION

Below you will find a list of the hotels which the FSMA has recommended over the past several years. The hotels are ordered according to their walking distance from the FSMA and you can see their position on the map.

Please note that no special prices have been negotiated with the hotels.



THE DOMINICAN BRUSSELS

Rue Leopold 9 - 1000 Brussels

www.thedominican.be

Email: reservations@thedominican.carlton.be

1 km from FSMA



NH COLLECTION BRUSSELS GRAND SABLON

Rue Bodenbroek 2/4 - 1000 Brussels

www.nh-hotels.fr

Email: nhgroupsales.be@nh-hotels.com

1.4 km from FSMA



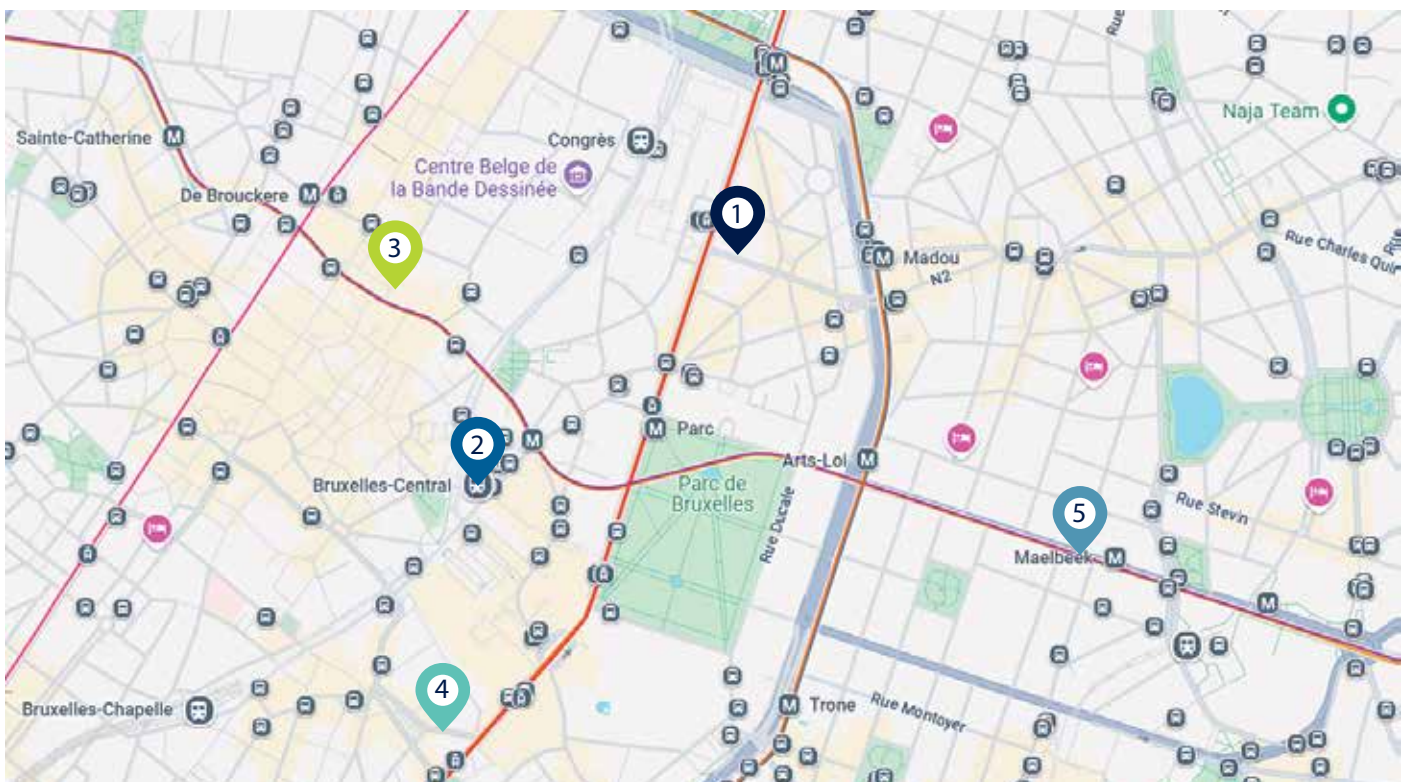
THON HOTEL EU

Rue de la Loi 75 - 1040 Brussels

www.thonhotels.be

Email: eu.conference@thonhotels.be

1.4 km from FSMA



ABOUT BRUSSELS

THE HEART OF EUROPE

Brussels is not only the capital of Belgium, but also the de facto capital of the European Union. It's a multilingual, multicultural city where French, Dutch, and English are widely spoken.

Must-see Highlights

GRAND PLACE (GROTE MARKT)

- **What it is:** The central square of Brussels, a UNESCO World Heritage Site.
- **Highlights:** Stunning guildhalls, the City Hall, and the King's House (Maison du Roi).
- **Why visit:** It's considered one of the most beautiful squares in Europe.

ATOMIUM

- **What it is:** A giant steel structure modeled after an iron crystal magnified 165 billion times.
- **Highlights:** Exhibitions inside the spheres, panoramic views of the city.
- **Why visit:** Symbol of Brussels and the 1958 World's Fair (Expo 58).

ROYAL MUSEUMS OF FINE ARTS OF BELGIUM

- **What it is:** A collection of several museums including the Old Masters, Magritte Museum, and Modern Art Museum.
- **Highlights:** Works by Rubens, Magritte, Bruegel.
- **Why visit:** A must for art lovers, especially fans of surrealism.



MANNEKEN PIS

- **What it is:** A small statue of a urinating boy.
- **Highlights:** Frequently dressed in themed costumes.
- **Why visit:** Quirky, humorous, and iconic.



ROYAL PALACE OF BRUSSELS

- **What it is:** Official palace of the King of the Belgians (used for official functions, not residence).
- Please note that it is not possible to visit the entire interior, but only the BELvue Museum.

ST. MICHAEL AND ST. GUDULA CATHEDRAL

- **What it is:** A majestic Gothic cathedral.
- **Highlights:** Stunning stained glass, twin towers.
- **Why visit:** Important religious site and architectural gem.

BELGIAN COMIC ART MUSEUM

- **What it is:** Museum dedicated to comic art.
- **Highlights:** Tintin, The Smurfs, and more.
- **Why visit:** Showcases Belgium's rich comic book history located in a beautiful Art Nouveau building designed by Albert Horta

Tastes of Brussels

Mussels & Beer

Moules-frites paired with one of Belgium's many craft beers.

Frites

Belgian fries are legendary. Try them with andalouse sauce!

Chocolate

Visit shops like Mary, Neuhaus, Pierre Marcolini, or Leonidas for sweet perfection.

Waffles

Crispy or soft, topped with chocolate, cream, or strawberries—don't miss them!



Local Tips

Sablon & Marolles

Great for vintage shops, weekend markets, and art galleries.

Ixelles & Saint-Gilles

Trendy neighbourhoods full of cafés, boutiques, and charm.

Galeries Royales Saint-Hubert

Elegant shopping under glass arcades.



TRAVELLING / TRANSPORT

HOW TO GET FROM THE AIRPORT TO THE HOTEL

Public transport connects Brussels Airport with the centre of the city.

Here is an overview map of public transport available (we recommend that you get a taxi and/or take the train):



By Taxi

- You'll find the official taxi services of Brussels Airport right outside the arrivals hall. No need to book in advance.
- Approximate cost: €50
- Approximate time: around 20 minutes in light traffic

By Train

- When you arrive at Brussels Airport, the station is located under the departures and arrivals halls.
- Brussel's Central Station (for those staying at the Thon Hotel EU, it is better to get off at the Schuman station).
- Approximate costs: €12.70 (one-way)
- Approximate time: 17 minutes

USEFUL INFORMATION

- The official tourist website: <https://www.brussels.be/tourism>
- Public transport system: <https://www.brussels.be/public-transport>
- The international country code for Belgium is +32.

SECURITY

Free emergency telephone lines

112 European emergency call

The European emergency telephone number is 112, which you can use in the member states of the European Union in case you need urgent help from a fire brigade, a medical team or the police.

Website: External site www.112.be

Application: External site app 112 BE

100 Fire brigades and ambulance

Service of fire brigades.

Emergency medical aid 24 hours a day.

101 Federal Police

To call in case of extreme urgency.

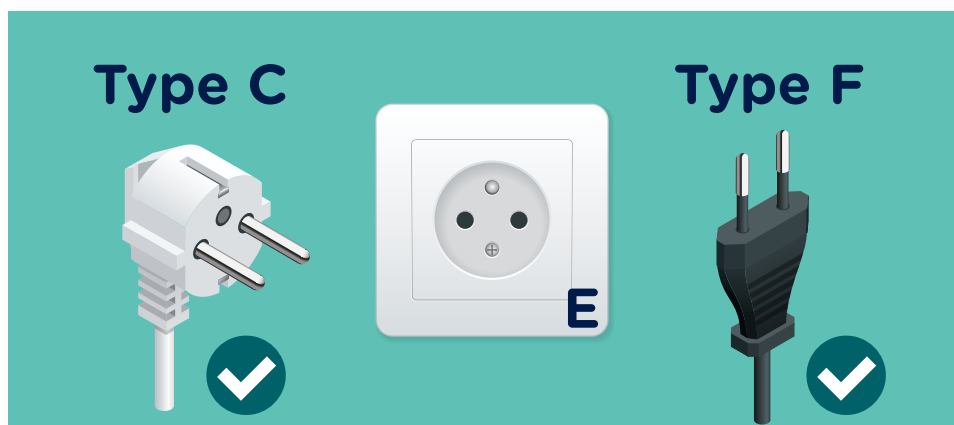
Website: External site www.polfed.be

SMOKING POLICY

In Belgium, you are not allowed to smoke in public buildings, at work, in cafés, etc.

ELECTRICITY

The Brussels electricity network is 220-240 volts.



REGISTRATION AND CONTACT

As registration is free of charge and our capacity is limited, we encourage you to register for our event early to secure your place. If you are unable to attend the conference, please feel free to share the registration link with one of your colleagues who may be interested. Please fill in the registration form no later than 20 October 2025.

The personal data which you will provide to the FSMA via this form will be processed by the FSMA as set out in its [Privacy Policy](#).

If you need more information, please feel free to contact us at the following email address conference@wikifin.be.

We very much look forward to seeing you in Brussels!

